



2022

2012  
2022

11

02  
04  
16  
20

2022 1 1 2022 12 31

1

24

2

38

26  
32  
36

40  
42  
44

3

46

4

58

48  
50  
54

60  
62  
66

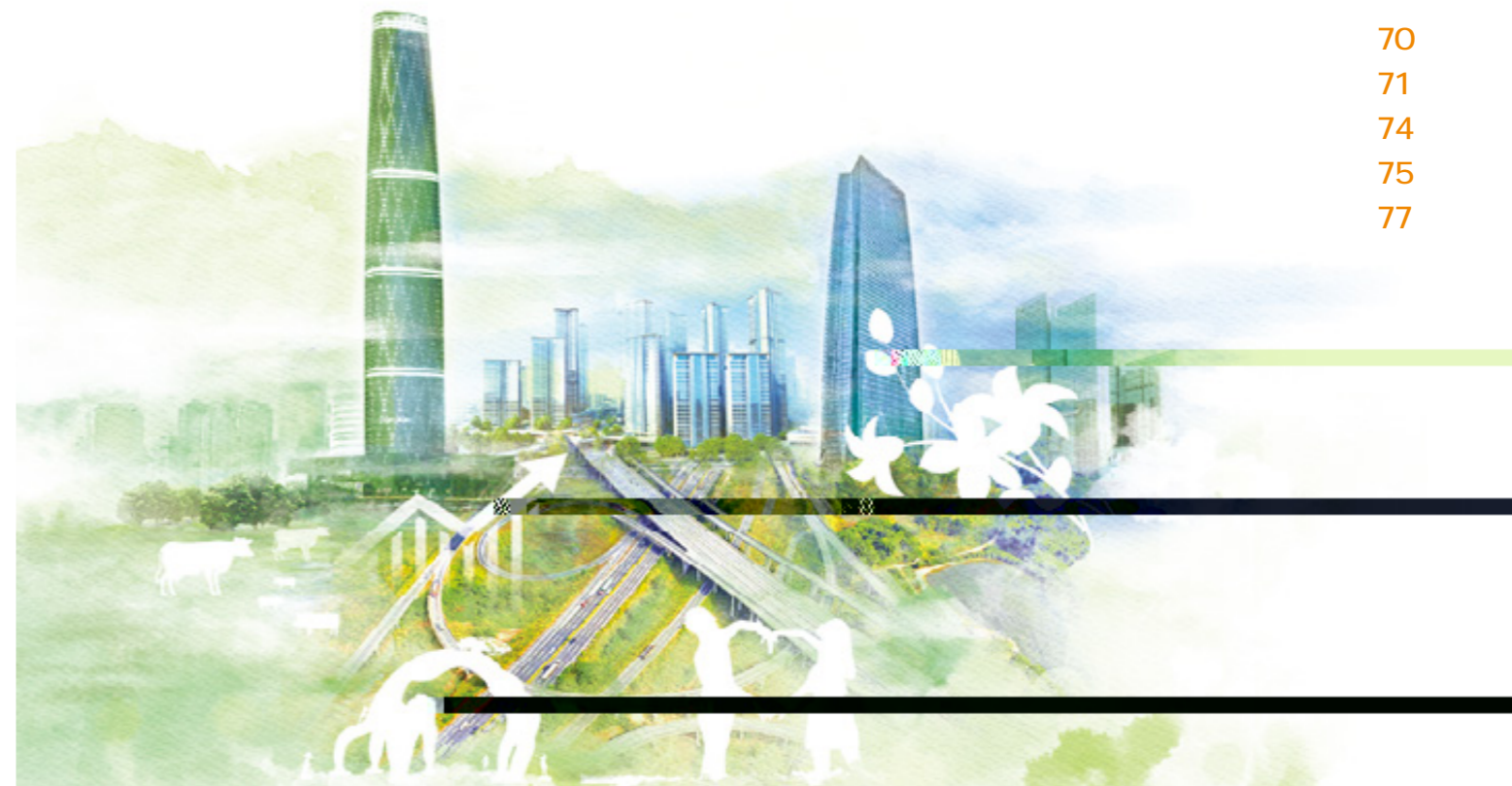
GRI

GRI Standards  
CASS-CSR4.0

70  
71  
74  
75  
77

<http://www.yuexiu.com/shzr/shehuizerenbaogao/>

8620 88836888



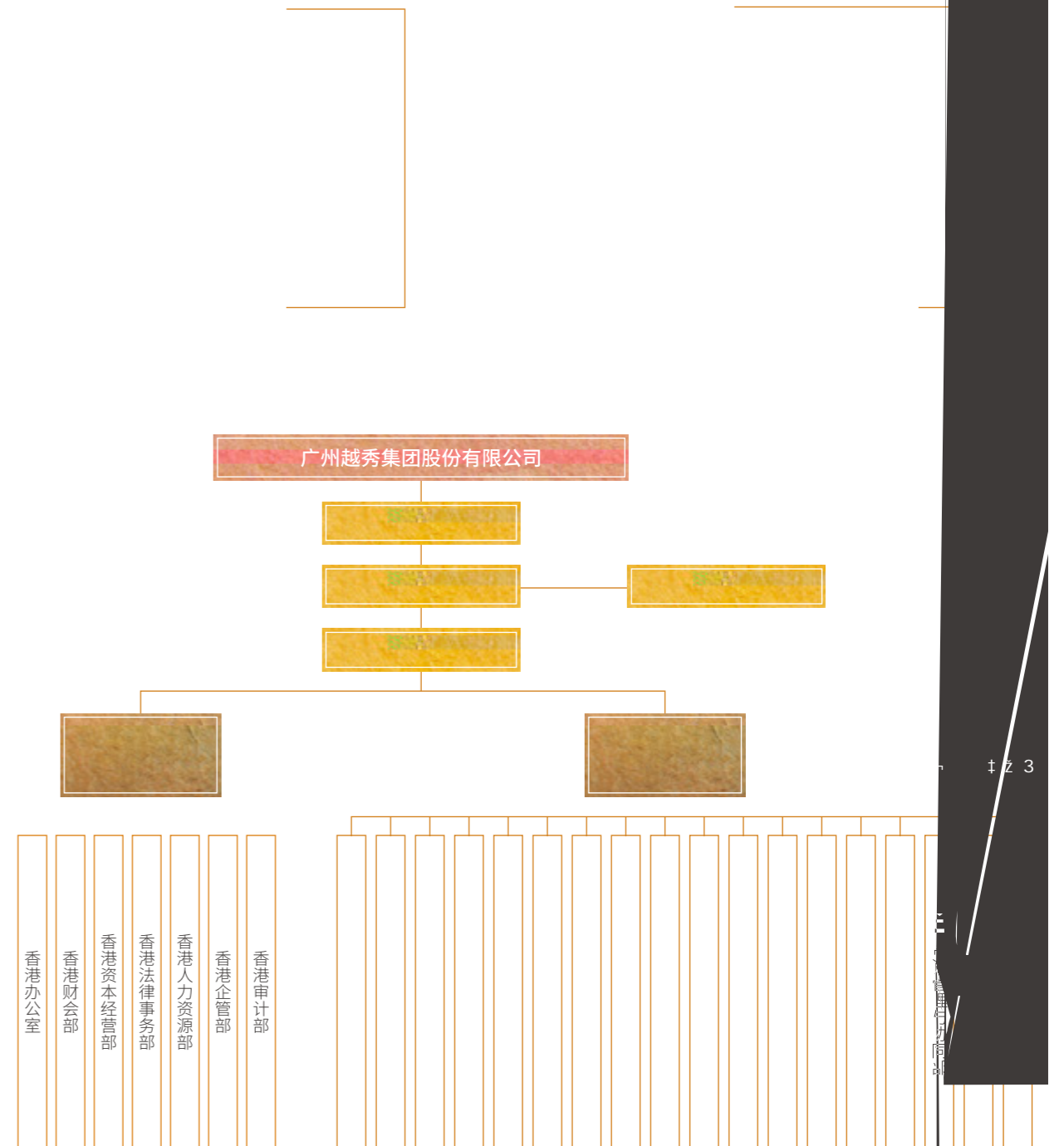
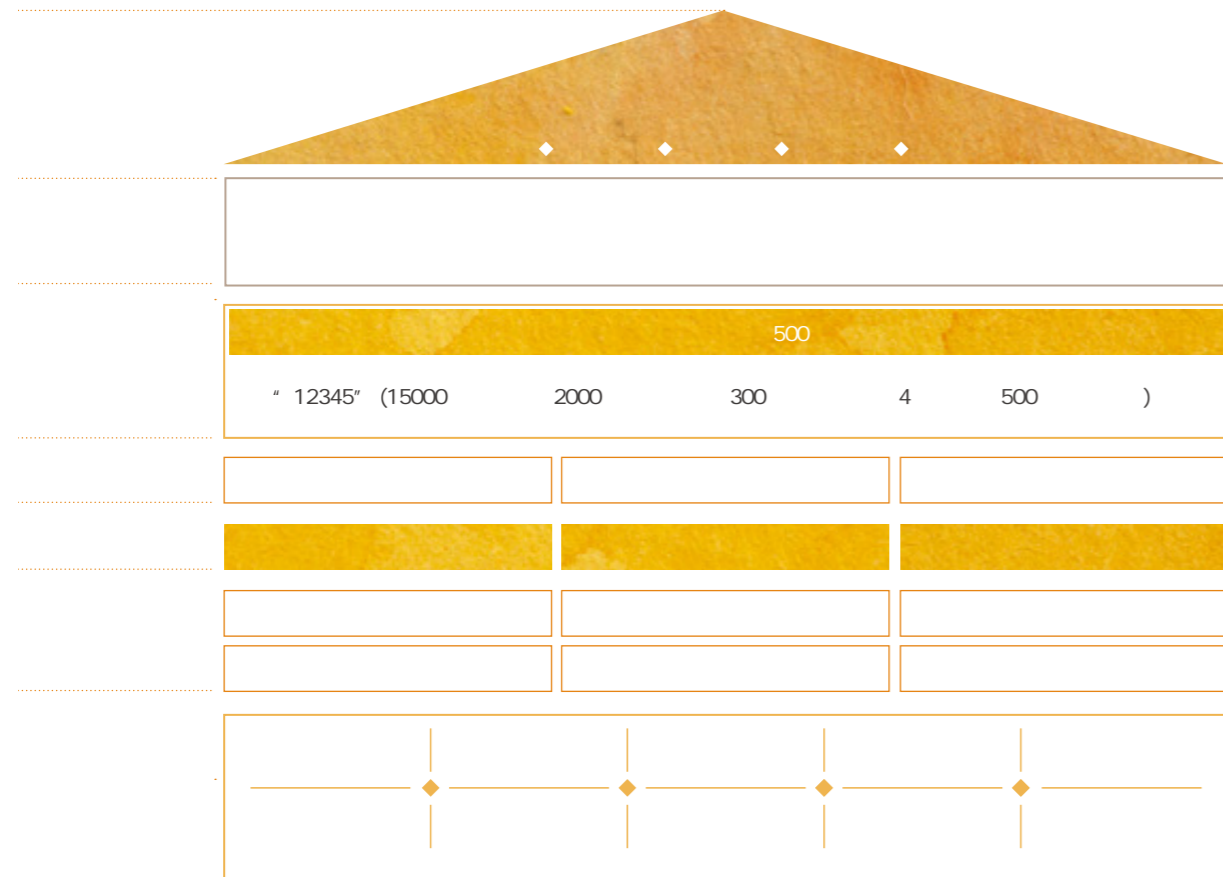


1985

38

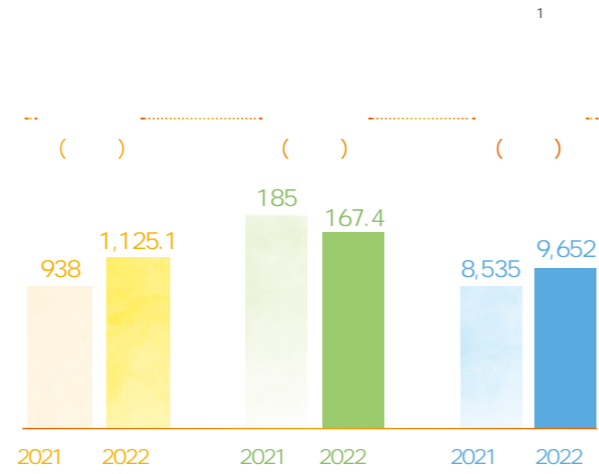
" 4+X"

REIT 6





# 2022



# 7



# 3



# 4



# 10



2022

2022



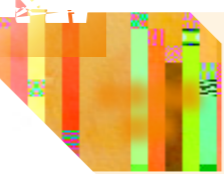






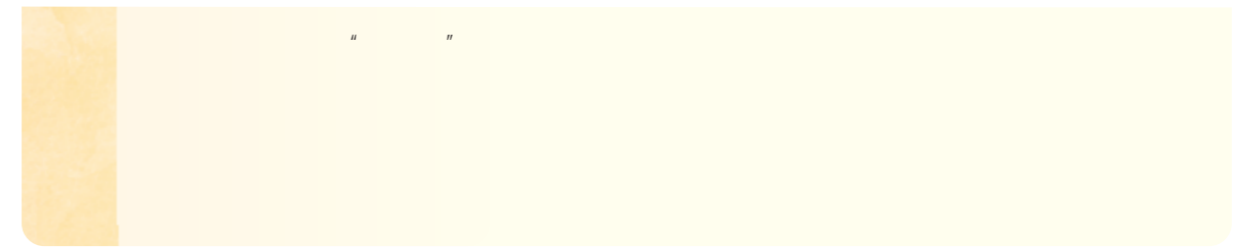


+



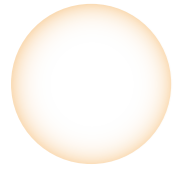
REITs

3



" "





2022

/					
/					

8 3 17.5 102  
 7 1  
 32  
 108  
 2022 8 3,000 10 6%



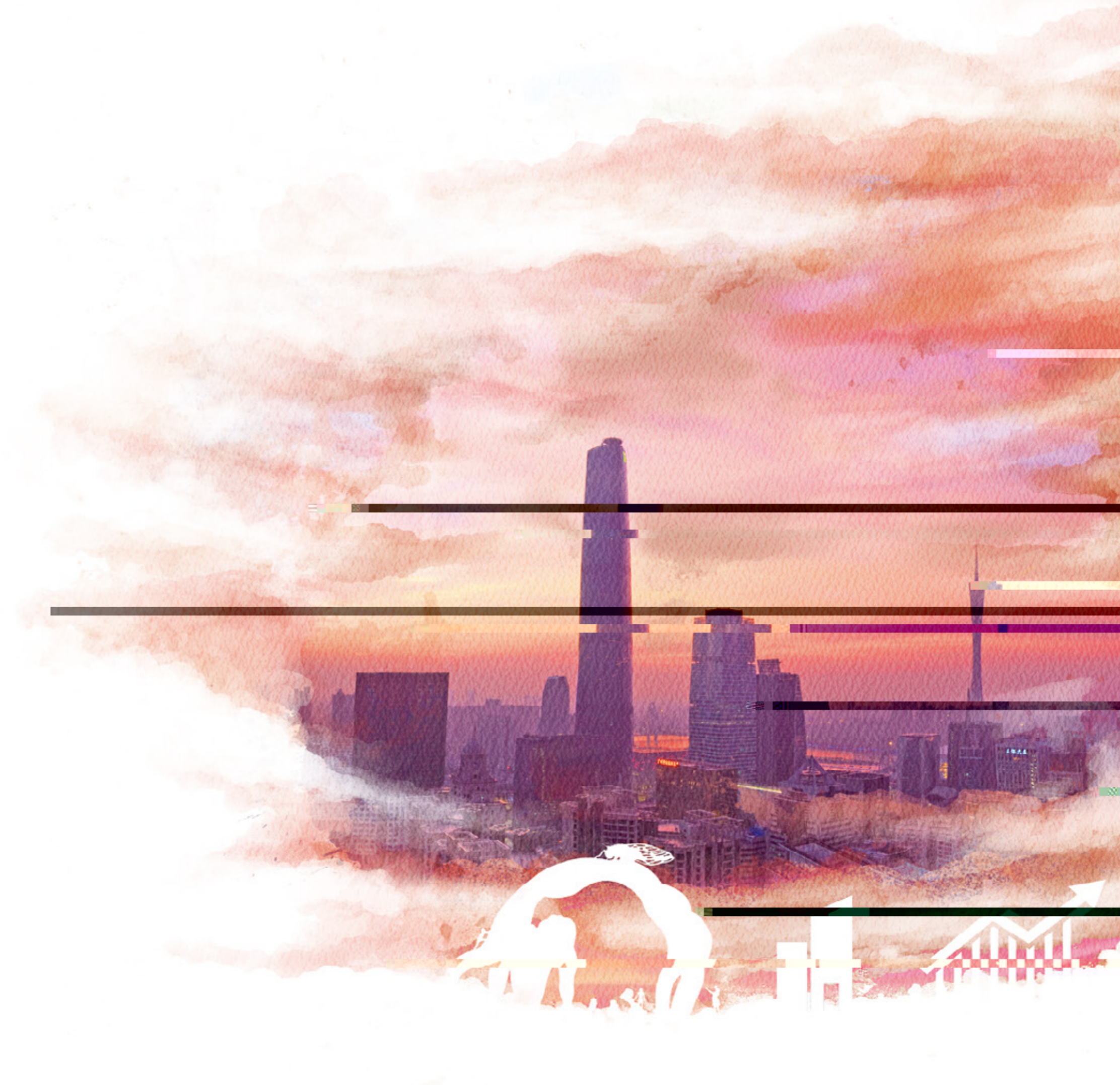


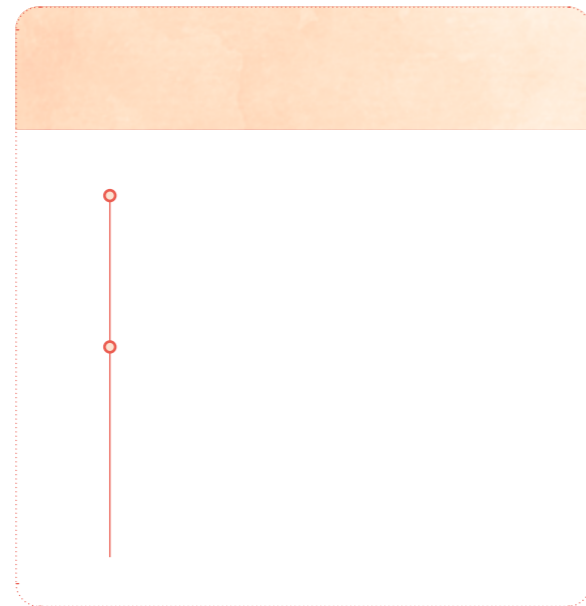
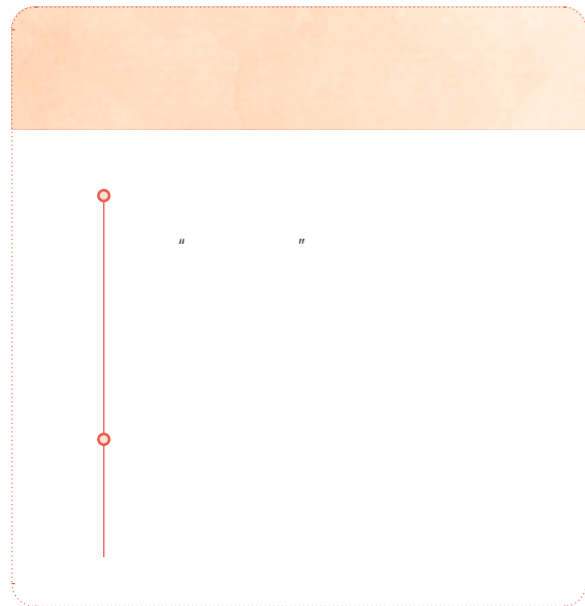
	2021	2022	2023
Revenue	1,000	1,430	1,800
Expenses	300	400	500
Profit	700	1,030	1,300
Assets	200	250	300
Liabilities	100	120	150
Equity	100	130	150



2030

SDGs

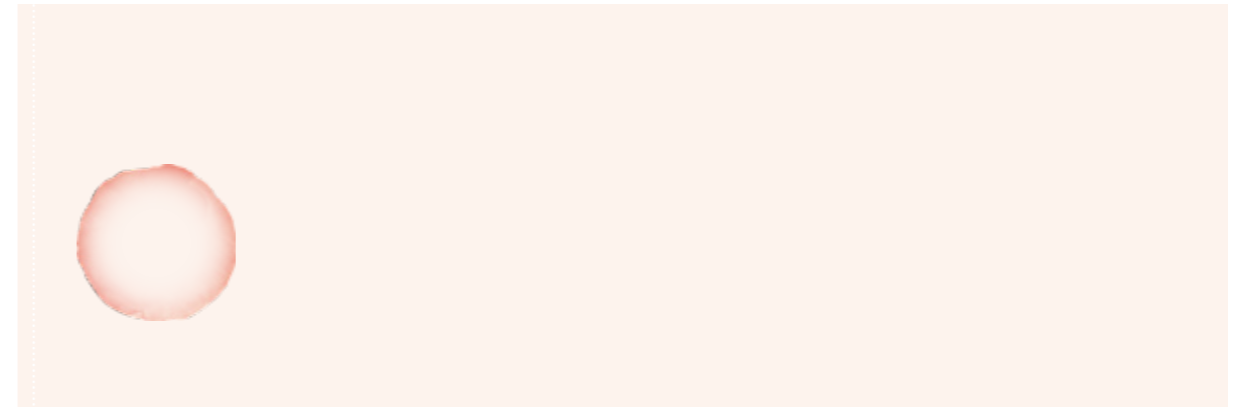




2022 10 25







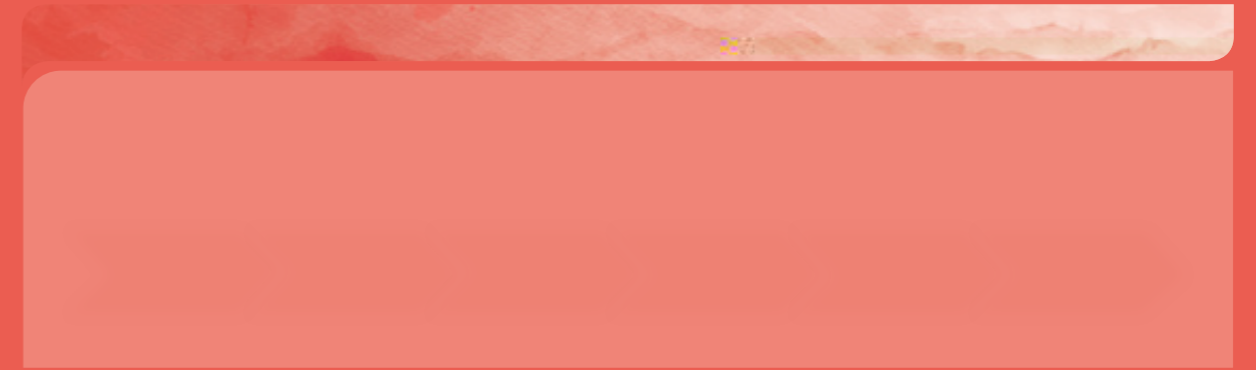
- “ YESite   “ YESense   “ YESmart   “ YESocial   “   “
  - “ YES
  - “   “   “   “
- YESite   YESense   YESmart   YESocial

- “   “

- 

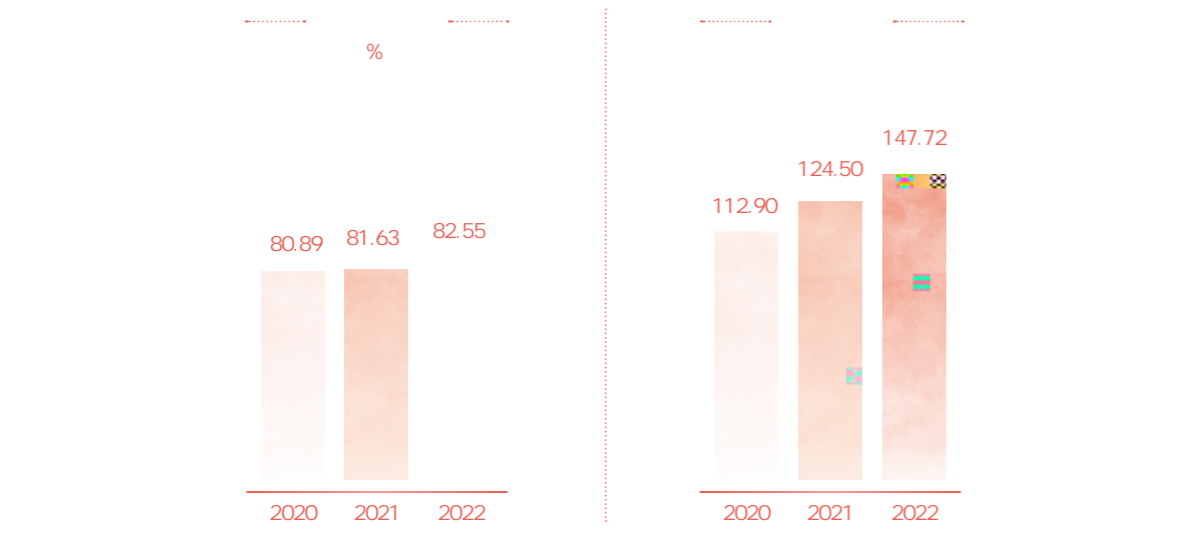
- LAB

  - 
  -





500



%

2022

38

" 4+X"

93%

TOD TOD

1.0 " +

"TOD5.0

" " " " "

" " " " "

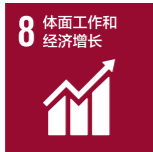
REITs 3

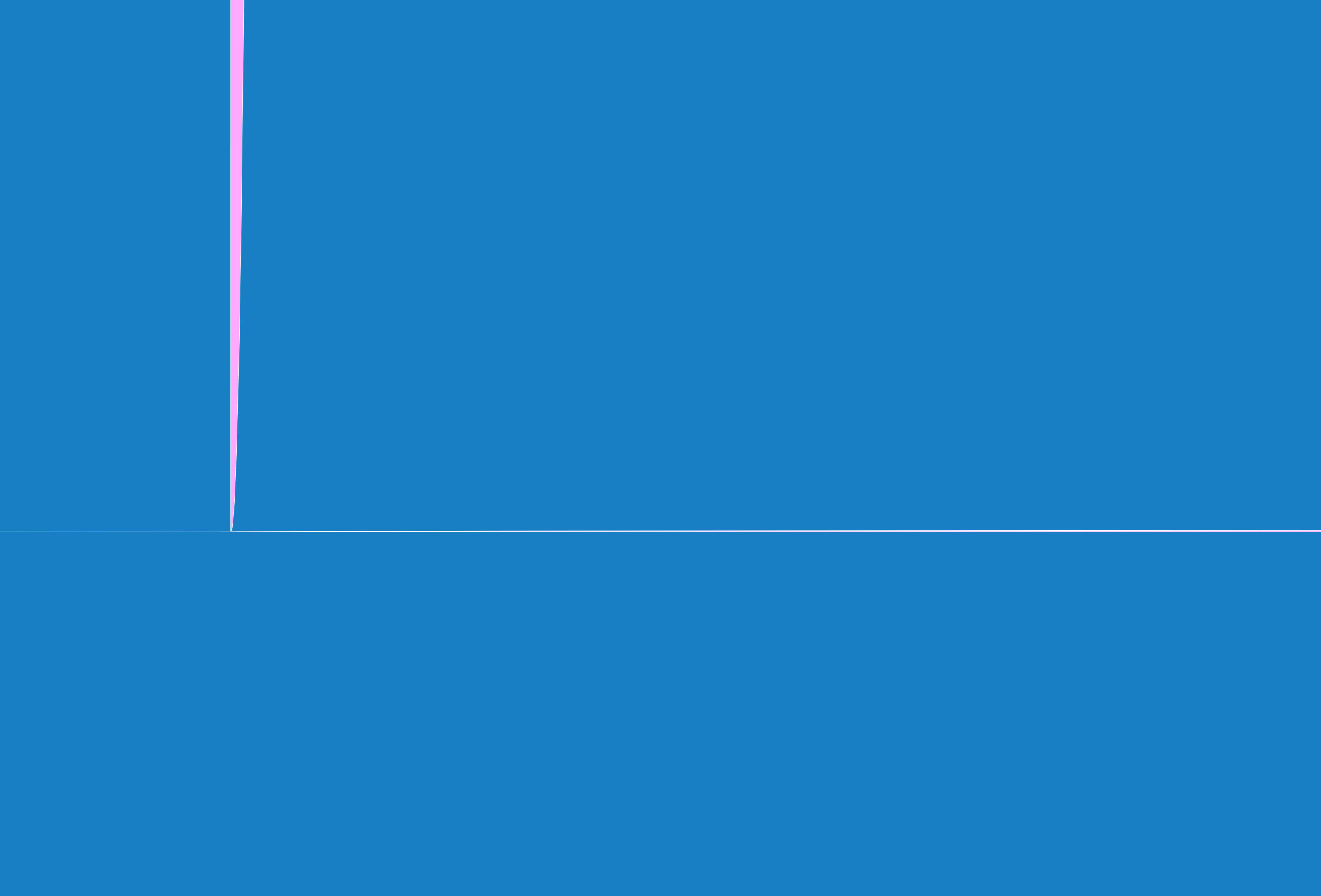
REIT

" " " 400

" " " "

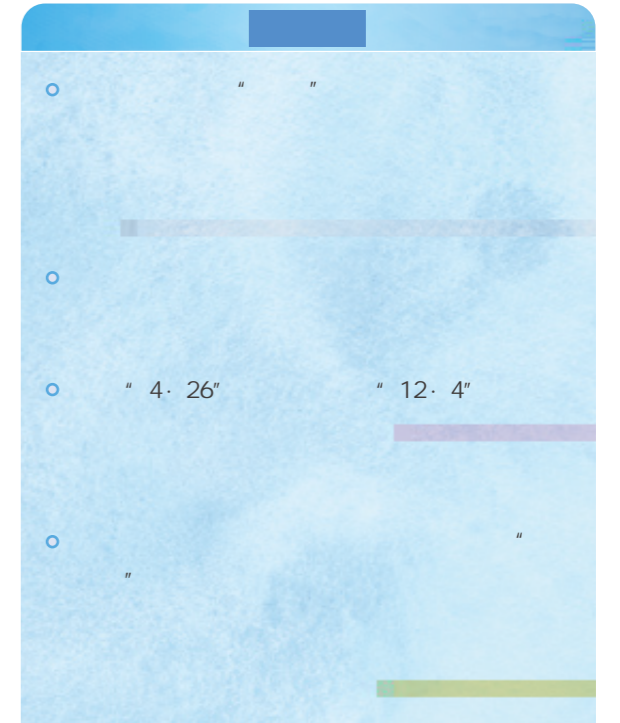
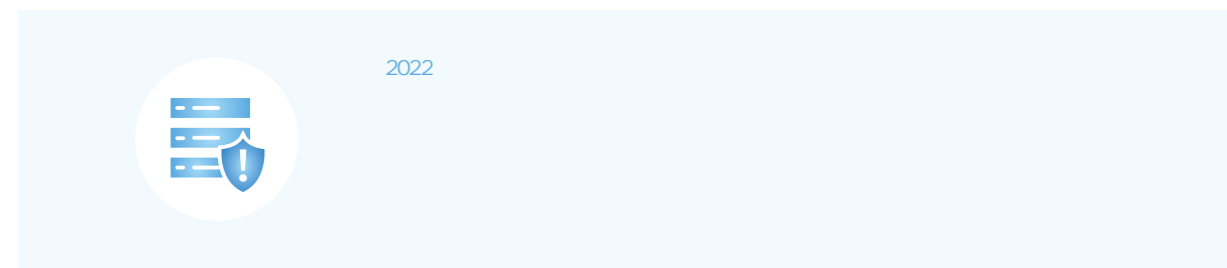
3 4 10





2022 " " " "

" "



•

“

”

TOD

“

+

”

+

+

+

”

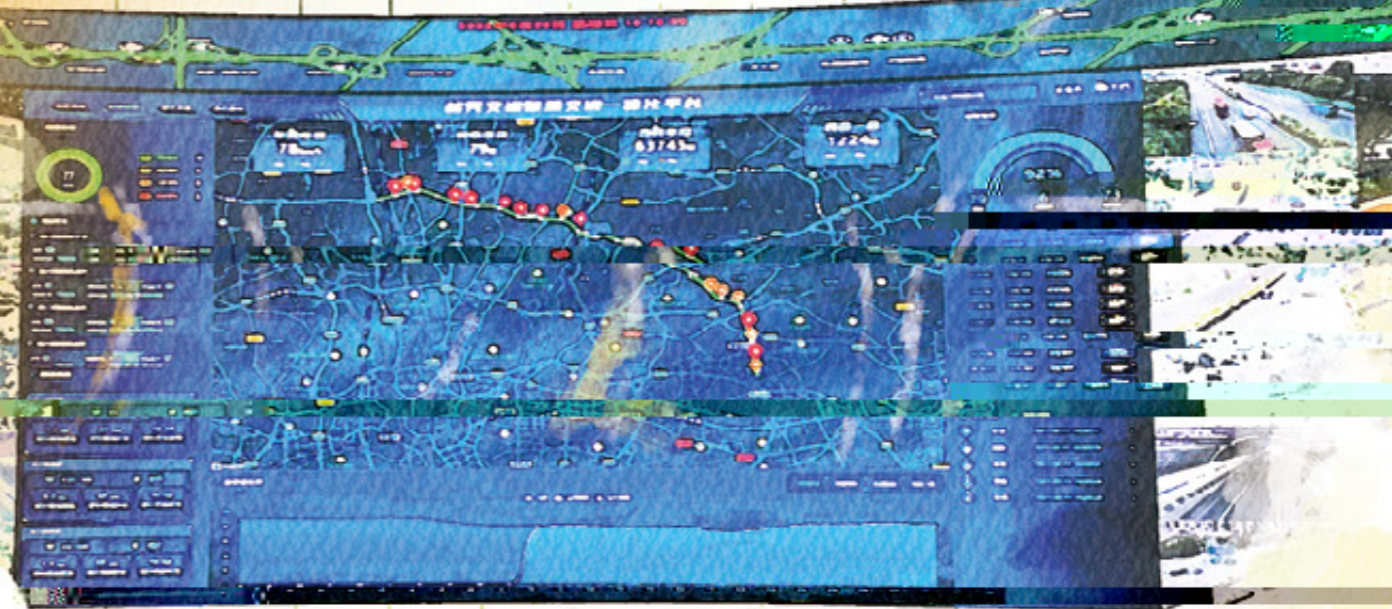
”

”

“

”

# 北二环智慧营运监控中心



8 体面工作和  
经济增长



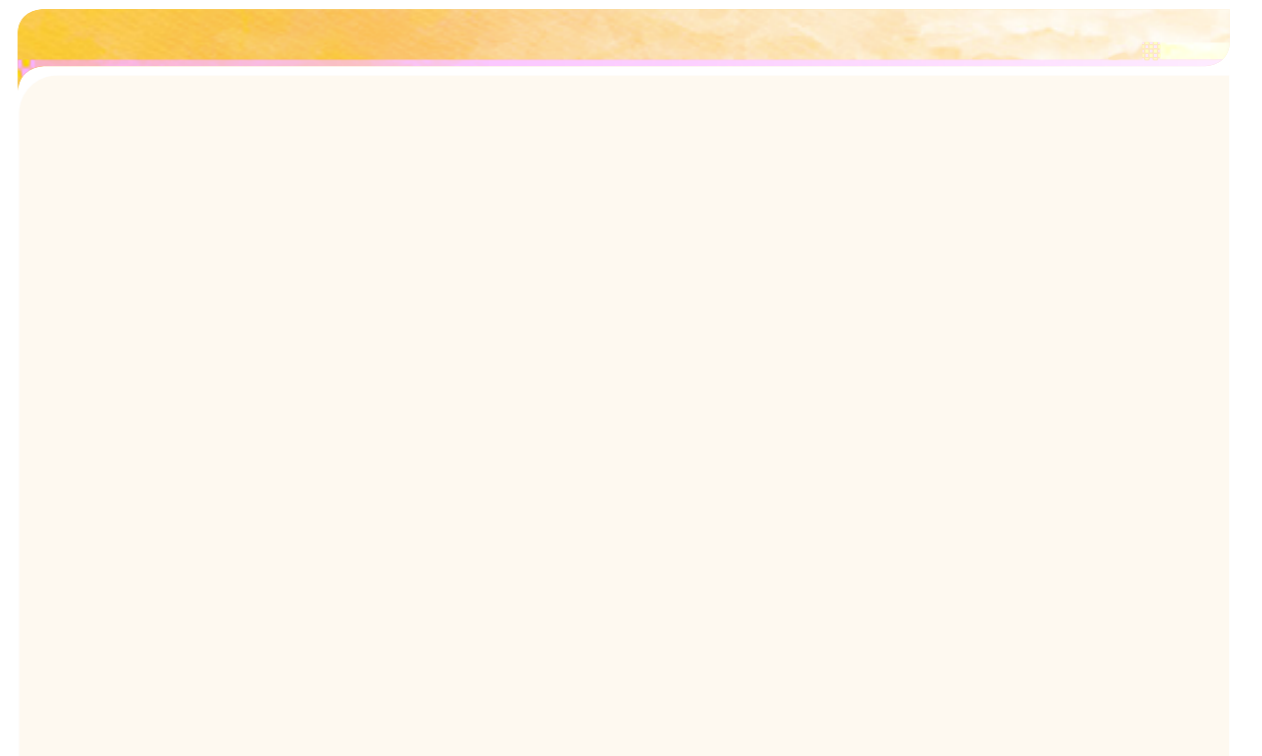
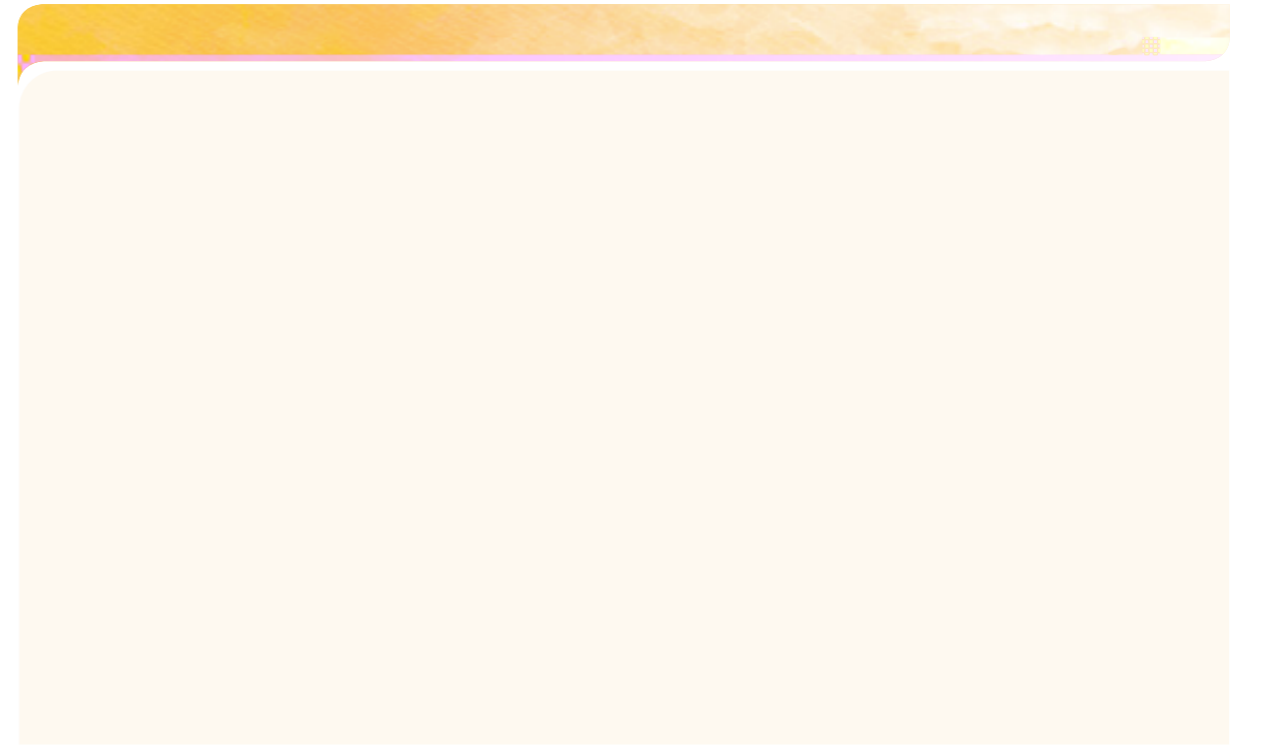




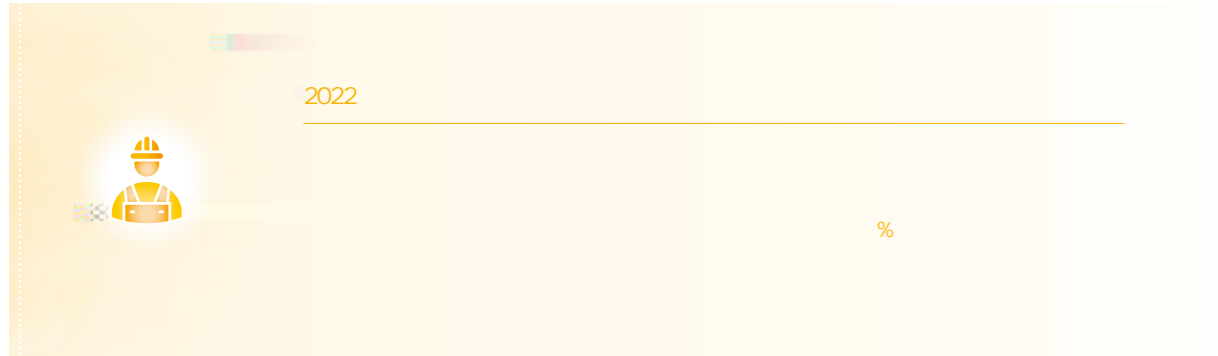
2022

\* 1+N\*

A decorative footer element with a light beige background. It features a horizontal bar with a small graphic on the left side. The text "2022" is in the top left, and "\* 1+N\*" is in the center.



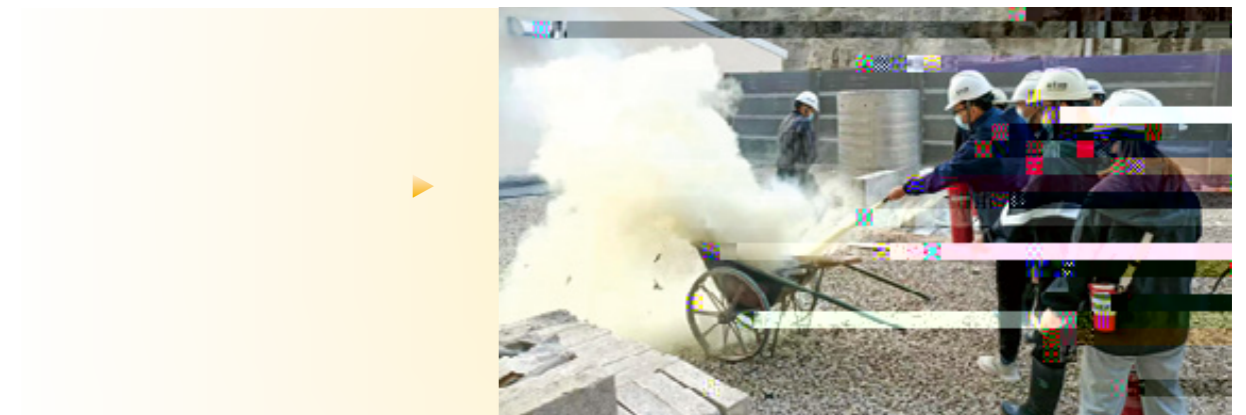
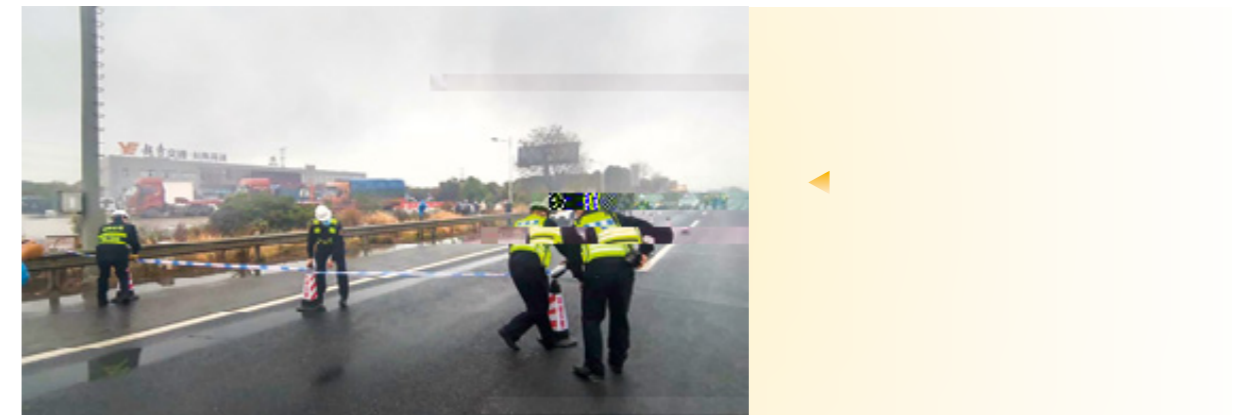
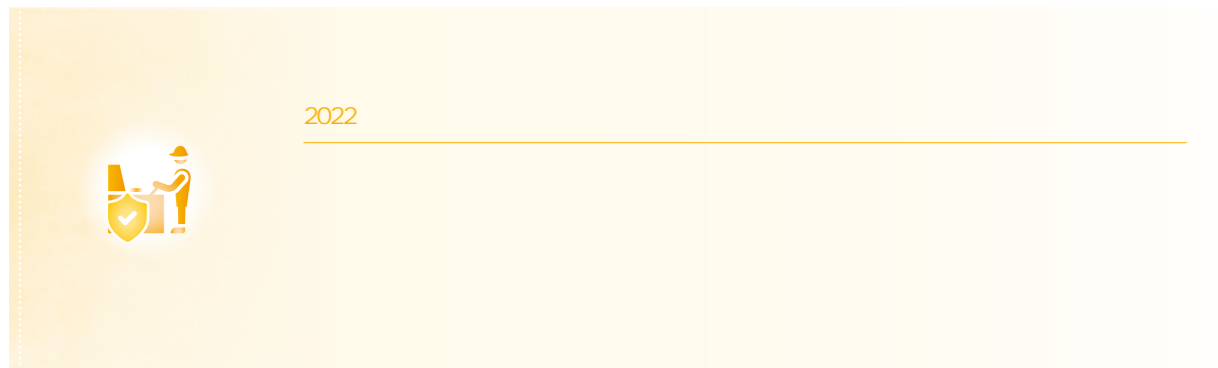


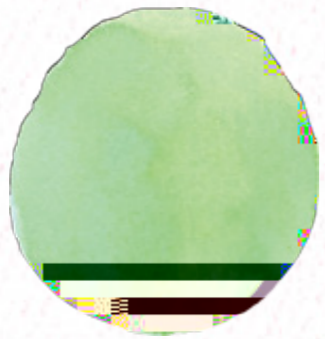


6

4

2022





2030

SDGs



2022

2022 10 11

2,006

500



2022 4

	84.1
59.2	1.8
60	241.6
84.4	75.6
105,450	2.7
"	"





2022 10

" "

24


" " 2022

45 4,000

11

103

4.8



---



---



---

•

" "

2022

" "

2022 3

100



2022 5

" "

100  
40

2022 7

" 2022

15

70

" 2022



2022 8

" "

2022 9



2022 11

" "

" "





•  
" " "  
" "



- 2022  
34  
499.0 2021 113%
- " 2022  
TOP10\* " 2022  
TOP10\*
- 2022  
LEEDv4.1 O+MEB
- 4



- 
- 
- 
- 



- 
- 



- 
- 



- 2022  
130th  
SNCR SCR  
332.8
- 2022

" " " 3.0

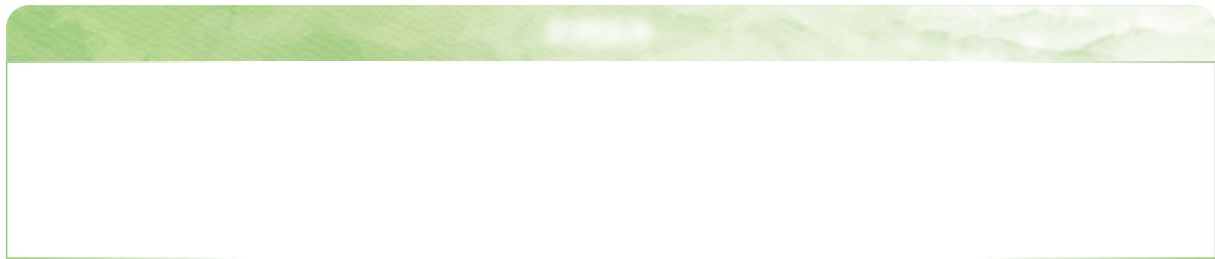
ESG " " 2022 16 2022

1,700 59

38.31 ABS 2022 151

3,000


2022 13



	2022	
L	COD	159mg/
	133mg/L	
	34mg/L	18mg/L
	BOD5	41.6mg/L
	18.3mg/L	
	15%	



2022



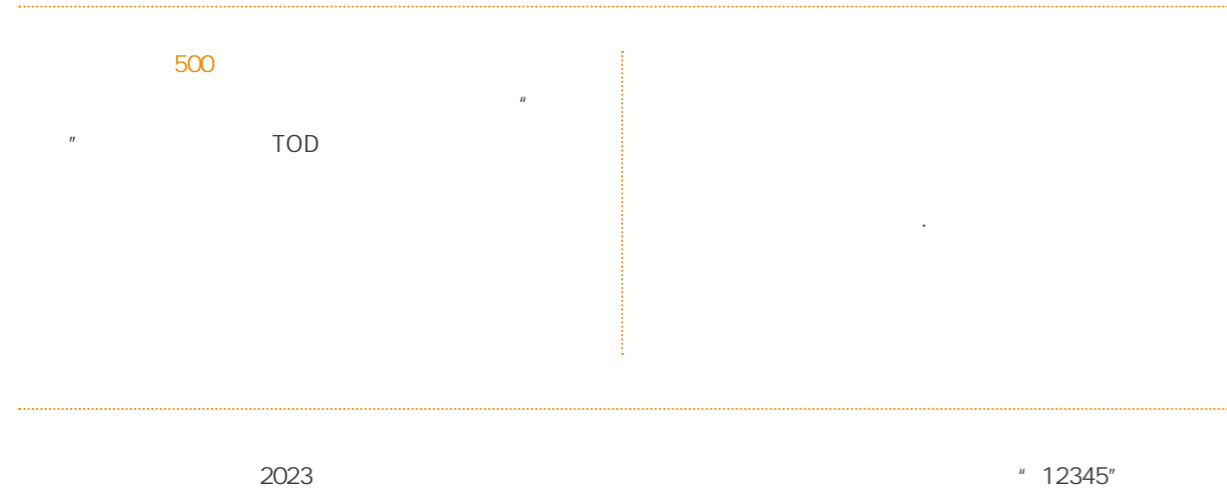
2022



2022




2023



		2020	2021	2022
	%	113.09	112.90	105.97
1		63425	75398	43867
		34	47	46
	%	99.4	99.4	99.4
	%	100	100	100
	%	100	100	100
	%	100	100	100
	%	100	100	100
	%	100	100	100
	%	97	96	98
	%	96.6	95.7	97.0
	%	86.3	85.6	87.0
		13050	26850	18196
		1013	1024	854
		1292	1758	2319
		129	197	217
		226	273	281
	%	56.92	58.00	45.33
	%	73	81	75
	%	58.91	67.00	70.50
		29937	36837	38027
		18620	22832	23807
		11317	14005	14220
		1298	1751	1953
	%	16.7	22.2	23.53
		37	77	39
	%	3.60	4.22	5.42

	2020	2021	2022
	5.67	5.12	5.49
	16912	15525	17866
	/	2022	2164
	1602	1744	1651
	3700	3705	2734
	21.81	37.82	45.53
	48	56	53
	83	54	46
	17.3	16.8	18.7
	28.1	30.7	20.3
	%	100	100
	%	100	100
	%	100	100
	2.2	1.49	1.3
	25931	42148	54489
	%	96	91
	135047	74747	39456
	1654	2723	3705
	42485	63577	80551
	0	0	0
	0	0	0
	0	1	1
	0	0	0
	0	0	0
	967	4238	7647
	254	422	706
	50	100	217
	1277	1091	874
	1236	2400	3236

	2020	2021	2022
2	1439577	1718538	1811959
/	1.26	1.26	0.89
/	29.21	26.93	27.65
/	25.96	32.65	26.59
/	0.11	0.09	0.08
/	3367.93	3024.14	2426.61
	6.05	7.88	9.60
	193	319	362
3	743511	491469	506207
/	52.63	60.54	54.34
/	176	180	156
/	740.35	681.51	528.43
4	198828310	225850287	224679127
5	25825369	25182766	25049949
/	59.38	35.71	25.17
/	423.99	511.21	552.94
/	0.16	0.19	0.09
/	32366	33090	26784
	41564	44988	109175
	0	0	73000
	73478	164379	41502
	2007	5070	6660

- 1. 3
- 2. 3
- 3. 3
- 4. 3
- 5. 3

CASS-CSR4.0	GRI Standards
P1.1-1.3	102-1 102-50 102-51 102-52 102-53
P2.1-2.2	102-14 102-15 102-23
P3.1 P4.1-4.4 G1.1-1.2 G2.1-2.3 G3.1-3.3 G4.1 G5.1 G6.1 M1.2 M1.4 S4.1	102-2 102-3 102-4 102-5 102- 6 102-7 102-16 102-18 102-29 102-31 102-32 102-33 102-34 102-40 102-42 102-44 102-47
P3.2 S1.5 S4.12-4.14	201-1 203-1 203-2
M2.1-2.2 M2.14-2.15 S1.3 S1.5-1.6 S2.1-2.8 S2.10- 2.14 S2.16 S4.2	102-8 201-1 403-1 403-4 403-5 403-6 404-2 405-1
M1.1 M1.5-1.8 M2.11 M2.13 M3.1 M3.3 M3.5 M3.8 M3.11 S1.1-1.2 S1.4 S3.1-3.5	102-9 203-1 203-2 205-2 417-1 418-1
M1.3 M2.4 M3.4 M3.6- 3.7	203-1 203-2 205-2 404-2
S2.17-2.18 S4.6-4.11 E1.1 E1.3 E1.5 E1.7 E1.9 E2.1-2.3 E2.6 E2.8 E2.11 E2.13 E2.15 E2.17 E2.19 E3.1-3.4 E3.6	301-2 301-3 302-5 303-3 304-2 306-2 401-2
A1	103-2
A2 M2.3 M2.5-2.6 M2.16 M2.18	302-1 302-2 302-3 302-4 303-1 305-1 305-2 305-4 305-7 401-1 403-9 404-1
A5	102-55
A4	102-56
A6	



